

# PROPANE TANK COVER - STANDARD AND DELUXE MODEL PC-100

## ASSEMBLY INSTRUCTIONS

### HARDWARE COMPONENTS - STANDARD PC-100

2 Plastic Shells      7 3/16" x 1/2" Bolts      7 3/16" Lock Nuts

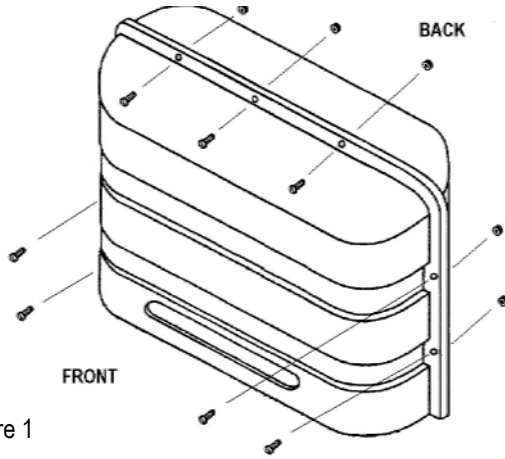


Figure 1

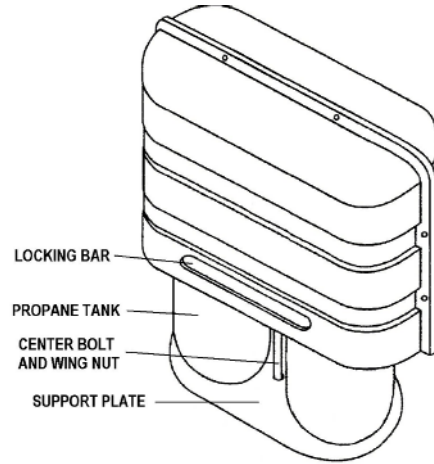


Figure 2

### HARDWARE COMPONENTS - DELUXE PC-100

2 Plastic Shells      1 Oval Shaped Plastic Door      1 Metal Thumb Screw      1 Washer      1 1/4" Hex Nut  
 1 1/4" Lock Nut      1 3/4" Stainless Steel Spring      7 3/16" x 1/2" Bolts      7 3/16" Lock Nuts      1 Black Thumb Screw

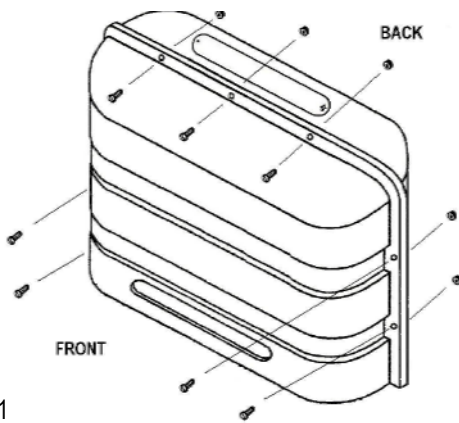


Figure 1

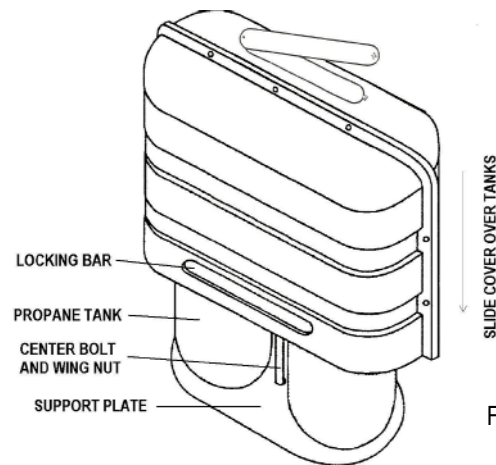


Figure 2

Step 1: Assemble the 2 plastic shells as shown in Figure 1 so that the side without the access panel is located at the front.

Step 2: Install the 7 - 3/16" bolts through the predrilled holes at the front of the cover (see Figure 1) and fasten these bolts with the 7 lock nuts from the opposite side. Tighten the nuts firmly (DO NOT OVERTIGHTEN).

Step 3: Slide the propane tank cover over the tank(s) down to the support plate so that the locking bars are snapped tightly under the tank(s) (see Figure 2).

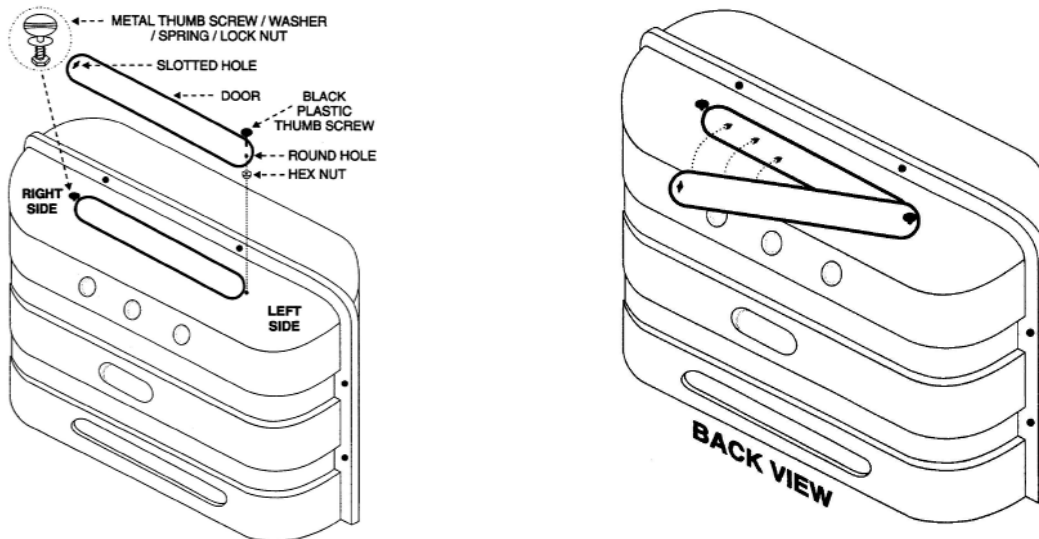
**NOTE:** This cover for propane gas bottles is designed for a snug fit to prevent accidental lifting or vibrations during road travel. If the fit is tighter than desired, simply loosen the wing nut on the center of the stand and slide each bottle toward the center until the desired fit is achieved. Make sure that the wing nut is tightened again.



# PC-100 DOOR COVER ASSEMBLY INSTRUCTIONS

## HARDWARE COMPONENTS - DELUXE PC-100

- |                               |                     |                       |                    |
|-------------------------------|---------------------|-----------------------|--------------------|
| 1 Plastic Door                | 1 Metal Thumb Screw | 1 Plastic Thumb Screw | 1 1/4" Flat Washer |
| 1 3/4" Stainless Steel Spring | 1 1/4" Hex Nut      | 1 1/4" Lock Nut       |                    |



- Step 1: Join the plastic door to the tank cover by inserting the plastic thumb screw through the round hole in the door and the hole on the "left side" of the tank cover. Secure with the 1/4" hex nut.
- Step 2: Secure the metal thumb screw to the tank cover by inserting the metal thumb screw through the hold non the "right side" of the tank cover. Place the 1/4" flat washer on the thumb screw followed by the 3/4" spring and then the 1/4" lock nut.
- Step 3: Tighten the lock nut until the end of the thumb screw is flush with the outside edge of the lock nut (see Figure 1). This will leave enough spring action to allow the thumb screw to be pulled and turned for opening and also to lock it in a closed position.

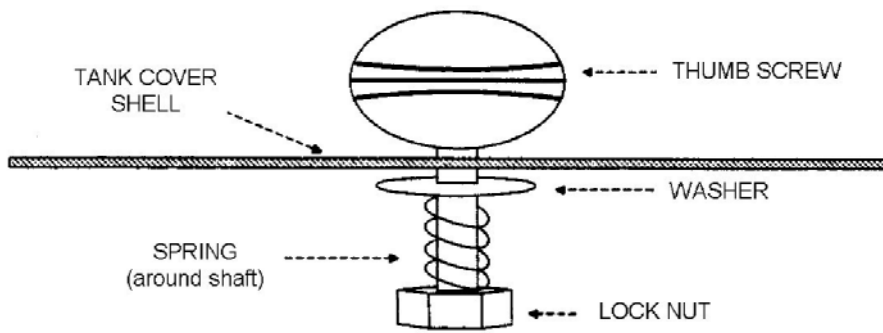


Figure 1

Tighten until bottom of lock nut is completely flush with end of thumb screw shaft. Do not allow the shaft to protrude beyond the bottom edge of the lock nut.

## OPERATING INSTRUCTIONS

To open and close the door, pull and turn the spring loaded metal thumb screw a quarter turn.

